

**PROJECT TITLE:**  
City Campus Hamilton  
Waikato Institute of Technology  
As-Built Buildings & Space Management

**CLIENT NAME:**  
Waikato Institute of Technology

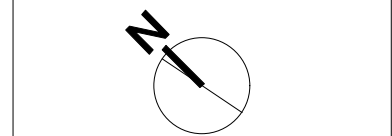


**SERIES TITLE:**  
A BLOCK  
City Campus Hamilton

- Notes**
- All data and information shown on these plans and within the CAD Files has been compiled from drawings and files supplied to Wintec as at January 2010.
  - All layouts are for as - built and space management purposes only.
  - No measurements have been taken on site and therefore these drawings are diagrammatic only and do not represent correct and complete measurements or scale drawings.
  - These files are not to be used for any working drawings or construction. Full and on site measurements and or audits are required before any design or working drawings commence.
  - ARTO Architects do not take responsibility for or guarantee the correctness of any part or component of these drawings and digital files.

**Revisions & Releases**

- Release 4.2.0  
March 2010 - Opti Assets Limited  
Also imported into Opti SMP March 2010.  
Space Management Plans only at this time.
- Release 3.0.0  
August 2011 - Spatial Advantage/CAD Solutions  
Space Management Plans Only.
- Release 4.0.0  
October 2011 - Spatial Advantage/CAD Solutions.  
Updated Layout & Space Management Plans.
- Release 5.0.0  
March 2017 - ARTO Architects.  
Updated Room numbering for third floor only.
- Release 5.2.0  
May 2017 - ARTO Architects  
Room name changes, as requested by E.L.



SCALE @ A3	1:200	DRAWN:	HS
CHKD:	--	PROJECT:	160114

**DRAWING TITLE:**  
GROUND FLOOR PLAN

DATE:	May 2017	SHEET SIZE:	A3
-------	----------	-------------	----

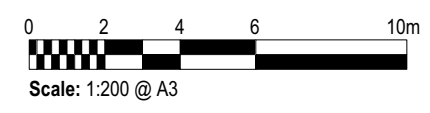
**SHEETS:**  
1 of 4

**RELEASE NO.:**  
5.2.0

Location Plan



Building	Level	Room Name	Room Number	Category	Area		
Block A	Ground	Entry	AG.00	J-Corridors/Toilets	42		
Block A	Ground	Lobby	AG.01	J-Corridors/Toilets	262		
Block A	Ground	Classroom	AG.02	A-Classrooms	71		
Block A	Ground	Classroom	AG.03	A-Classrooms	69.9		
Block A	Ground	Classroom	AG.05	A-Classrooms	64		
Block A	Ground	Help Desk	AG.06	L-Other	26		
Block A	Ground	Office	AG.07	F-Administration	20		
Block A	Ground	Toilets	AG.08	J-Corridors/Toilets	2		
Block A	Ground	PABX	AG.09	L-Other	3		
Block A	Ground	Corridor	AG.10	J-Corridors/Toilets	57		
Block A	Ground	Classroom	AG.11	A-Classrooms	69.3		
Block A	Ground	Classroom	AG.12	A-Classrooms	71.9		
Block A	Ground	Meeting Room	AG.14	F-Administration	16		
Block A	Ground	Female Toilet	AG.15	J-Corridors/Toilets	17		
Block A	Ground	Male Toilet	AG.16	J-Corridors/Toilets	19		
Block A	Ground	Office	AG.17	F-Administration	221		
Block A	Ground	Staffroom & Storage	AG.18	H-Communal/Social	4		
Block A	Ground	Stairs	AG.19	J-Corridors/Toilets	53		
Block A	Ground	Stairs	AG.20	J-Corridors/Toilets	42		
Block A	Ground	Plantroom	AG.21	L-Other	7		
Block A	Ground	Reception	AG.22	J-Corridors/Toilets	59		
Block A	Ground	Office	AG.23	F-Administration	9		
Block A	Ground	Office	AG.24	F-Administration	9		
Block A	Ground	Office	AG.25	F-Administration	8		
Block A	Ground	Office	AG.26	F-Administration	10		
Block A	Ground	Office	AG.27	F-Administration	15		
Block A	Ground	Storage	AG.28	I-Storage/Cleaning/Caretaking	9		
Block A	Ground	Office	AG.29	F-Administration	13		
Block A	Ground	Store	AG.30	I-Storage/Cleaning/Caretaking	11		
Block A	Ground	Toilets	AG.31	J-Corridors/Toilets	10	<b>Total</b>	
Block A	Ground	Toilets	AG.32	J-Corridors/Toilets	3	<b>Net</b>	<b>Gross</b>
Block A	Ground	Doctor	AG.33	F-Administration	12	1305.1	1378



PROJECT TITLE:  
 City Campus Hamilton  
 Waikato Institute of Technology  
 As-Built Buildings & Space Management

CLIENT NAME:  
 Waikato Institute of Technology



SERIES TITLE:  
**A BLOCK**  
 City Campus Hamilton

- Notes
- All data and information shown on these plans and within the CAD Files has been compiled from drawings and files supplied to Wintec as at January 2010.
  - All layouts are for as - built and space management purposes only.
  - No measurements have been taken on site and therefore these drawings are diagrammatic only and do not represent correct and complete measurements or scale drawings.
  - These files are not to be used for any working drawings or construction. Full and on site measurements and or audits are required before any design or working drawings commence.
  - ARTO Architects do not take responsibility for or guarantee the correctness of any part or component of these drawings and digital files.

Revisions & Releases

- Release 4.2.0  
 March 2010 - Opti Assets Limited  
 Also imported into Opti SMP March 2010.  
 Space Management Plans only at this time.
- Release 3.0.0  
 August 2011 - Spatial Advantage/CAD Solutions  
 Space Management Plans Only.
- Release 4.0.0  
 October 2011 - Spatial Advantage/CAD Solutions.  
 Updated Layout & Space Management Plans.
- Release 5.0.0  
 March 2017 - ARTO Architects.  
 Updated Room numbering for third floor only.
- Release 5.2.0  
 May 2017 - ARTO Architects  
 Room name changes, as requested by E.L.

SCALE @ A3	1:200	DRAWN:	HS
CHKD:	--	PROJECT:	160114

DRAWING TITLE:  
**FIRST FLOOR PLAN**

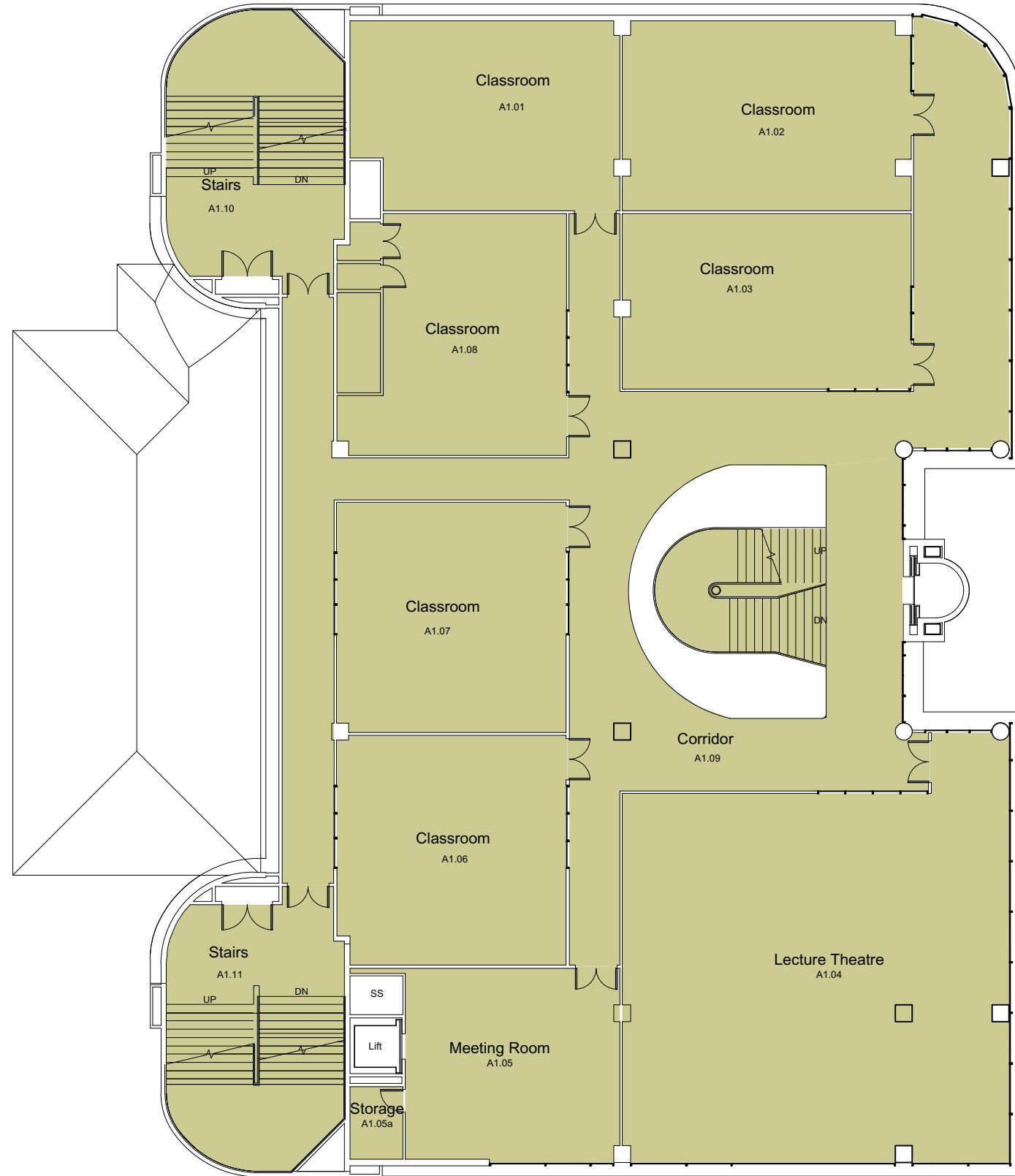
DATE:	May 2017	SHEET SIZE:	A3
-------	----------	-------------	----

CAD FILE:  
 City Campus - A Block Updates

SHEETS:  
 2 of 4

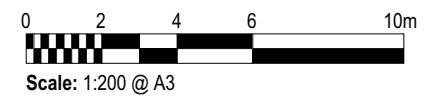
RELEASE NO:  
 5.2.0

Location Plan



Level 1

Building	Level	Room Name	Room Number	Category	Area		
Block A	1	Classroom	A1.01	A-Classrooms	65		
Block A	1	Classroom	A1.02	A-Classrooms	71		
Block A	1	Classroom	A1.03	A-Classrooms	66		
Block A	1	Lecture Theatre	A1.04	A-Classrooms	194		
Block A	1	Meeting Room	A1.05	F-Administration	54		
Block A	1	Storage	A1.05a	I-Storage/Cleaning/Caretaking	5		
Block A	1	Classroom	A1.06	A-Classrooms	69		
Block A	1	Classroom	A1.07	A-Classrooms	69		
Block A	1	Classroom	A1.08	A-Classrooms	62		
Block A	1	Corridor	A1.09	J-Corridors/Toilets	273	<b>Total</b>	
Block A	1	Stairs	A1.10	J-Corridors/Toilets	58	<b>Net</b>	<b>Gross</b>
Block A	1	Stairs	A1.11	J-Corridors/Toilets	58	1044	1157



PROJECT TITLE:  
 City Campus Hamilton  
 Waikato Institute of Technology  
 As-Built Buildings & Space Management

CLIENT NAME:  
 Waikato Institute of Technology

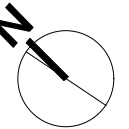


SERIES TITLE:  
**A BLOCK**  
 City Campus Hamilton

- Notes
- All data and information shown on these plans and within the CAD Files has been compiled from drawings and files supplied to Wintec as at January 2010.
  - All layouts are for as - built and space management purposes only.
  - No measurements have been taken on site and therefore these drawings are diagrammatic only and do not represent correct and complete measurements or scale drawings.
  - These files are not to be used for any working drawings or construction. Full and on site measurements and or audits are required before any design or working drawings commence.
  - ARTO Architects do not take responsibility for or guarantee the correctness of any part or component of these drawings and digital files.

Revisions & Releases

- Release 4.2.0  
 March 2010 - Opti Assets Limited  
 Also imported into Opti SMP March 2010.  
 Space Management Plans only at this time.
- Release 3.0.0  
 August 2011 - Spatial Advantage/CAD Solutions  
 Space Management Plans Only.
- Release 4.0.0  
 October 2011 - Spatial Advantage/CAD Solutions.  
 Updated Layout & Space Management Plans.
- Release 5.0.0  
 March 2017 - ARTO Architects.  
 Updated Room numbering for third floor only.
- Release 5.2.0  
 May 2017 - ARTO Architects  
 Room name changes, as requested by E.L.



SCALE @ A3	1:200	DRAWN:	HS
CHKD:	--	PROJECT:	160114

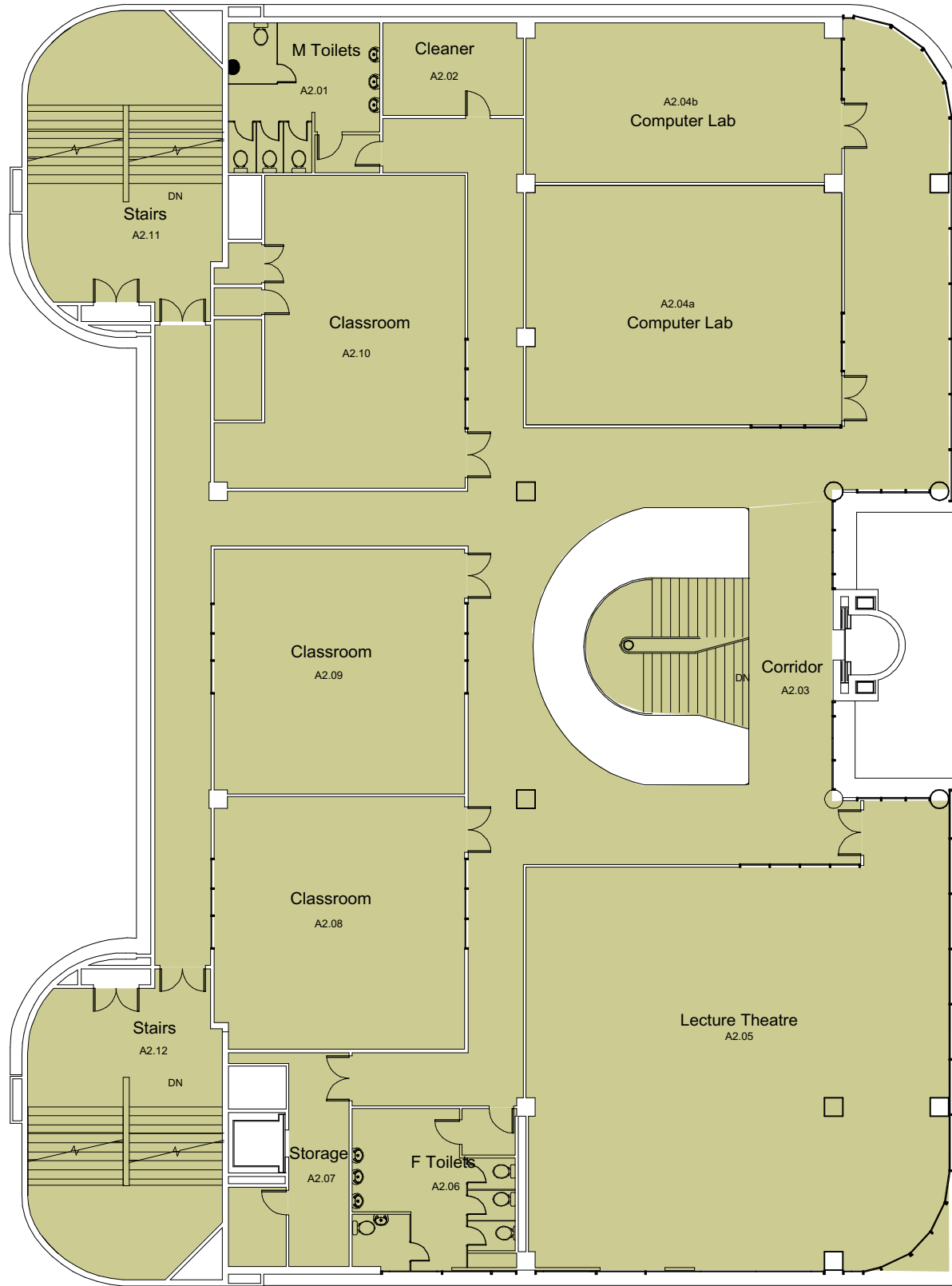
DRAWING TITLE:  
**SECOND FLOOR PLAN**

DATE:	May 2017	SHEET SIZE:	A3
-------	----------	-------------	----

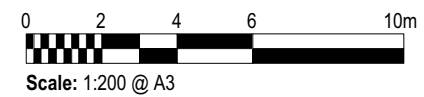
CAD FILE:  
 City Campus - A Block Updates

SHEETS:  
 3 of 4

RELEASE NO:  
 5.2.0



Level 2					
Building	Level	Room Name	Room Number	Category	Area
Block A	2	Male Toilets	A2.01	J-Corridors/Toilets	25
Block A	2	Cleaner	A2.02	I-Storage/Cleaning/Caretaking	14
Block A	2	Corridor	A2.03	J-Corridors/Toilets	291
Block A	2	Computer Lab	A2.04a	B-Laboratories & Workshops	82.6
Block A	2	Computer Lab	A2.04b	B-Laboratories & Workshops	54.6
Block A	2	Lecture Theatre	A2.05	A-Classrooms	191
Block A	2	Female Toilet	A2.06	J-Corridors/Toilets	28
Block A	2	Store	A2.07	I-Storage/Cleaning/Caretaking	15
Block A	2	Classroom	A2.08	A-Classrooms	69
Block A	2	Classroom	A2.09	A-Classrooms	68
Block A	2	Classroom	A2.10	A-Classrooms	72
Block A	2	Stairs	A2.11	J-Corridors/Toilets	58
Block A	2	Stairs	A2.12	J-Corridors/Toilets	58
				<b>Total</b>	
				<b>Net</b>	<b>Gross</b>
				267	1157



**PROJECT TITLE:**  
City Campus Hamilton  
Waikato Institute of Technology  
As-Built Buildings & Space Management

**CLIENT NAME:**  
Waikato Institute of Technology

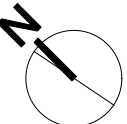


**SERIES TITLE:**  
A BLOCK  
City Campus Hamilton

- Notes**
- All data and information shown on these plans and within the CAD Files has been compiled from drawings and files supplied to Wintec as at January 2010.
  - All layouts are for as - built and space management purposes only.
  - No measurements have been taken on site and therefore these drawings are diagrammatic only and do not represent correct and complete measurements or scale drawings.
  - These files are not to be used for any working drawings or construction. Full and on site measurements and or audits are required before any design or working drawings commence.
  - ARTO Architects do not take responsibility for or guarantee the correctness of any part or component of these drawings and digital files.

**Revisions & Releases**

- Release 4.2.0**  
March 2010 - Opti Assets Limited  
Also imported into Opti SMP March 2010.  
Space Management Plans only at this time.
- Release 3.0.0**  
August 2011 - Spatial Advantage/CAD Solutions  
Space Management Plans Only.
- Release 4.0.0**  
October 2011 - Spatial Advantage/CAD Solutions.  
Updated Layout & Space Management Plans.
- Release 5.0.0**  
March 2017 - ARTO Architects.  
Updated Room numbering for third floor only.
- 5.1.0  
May 2017 - ARTO Architects  
Updated third floor room names



SCALE @ A3	1:200	DRAWN:	HS
CHKD:	--	PROJECT:	160114

**DRAWING TITLE:**  
THIRD FLOOR PLAN

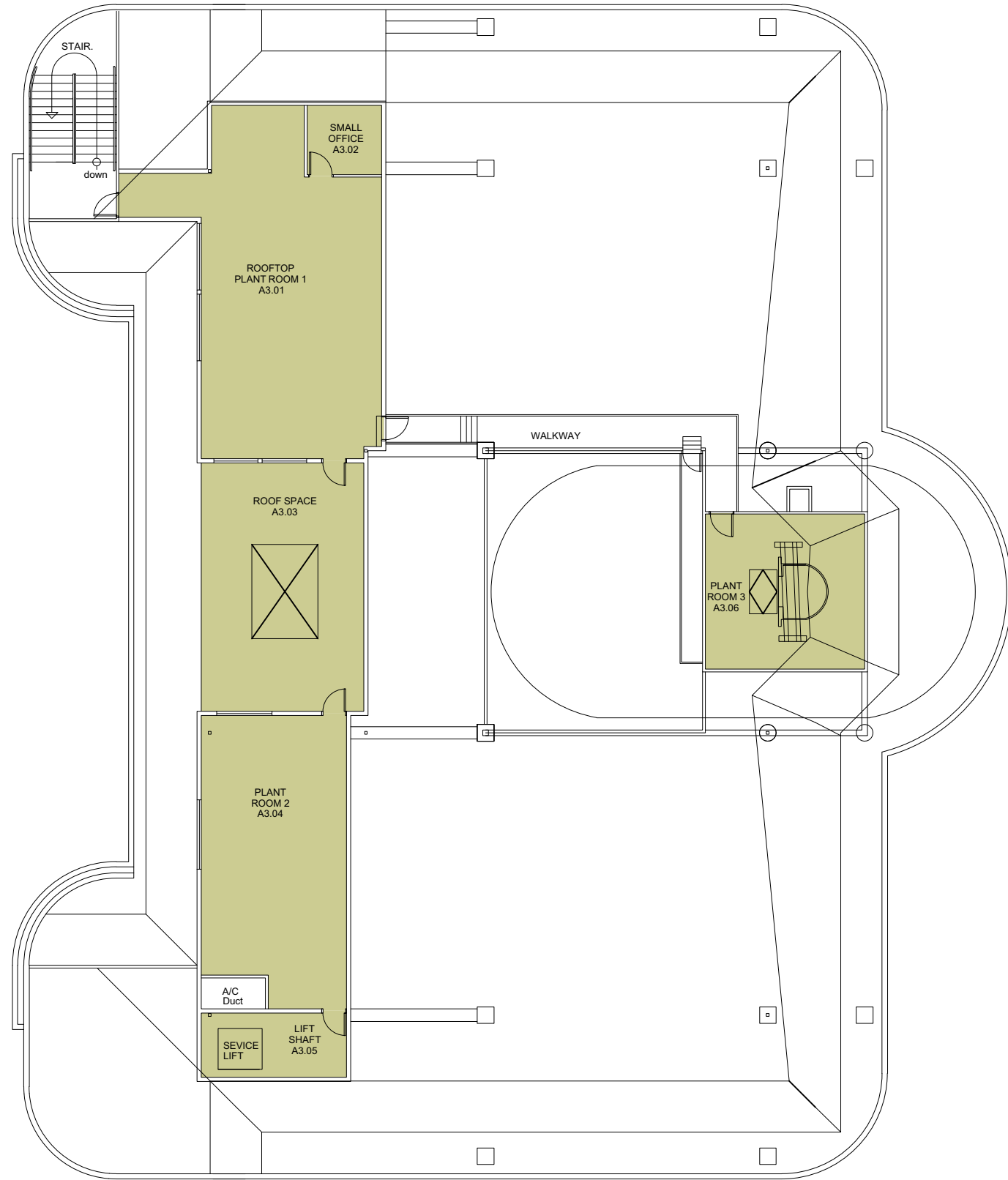
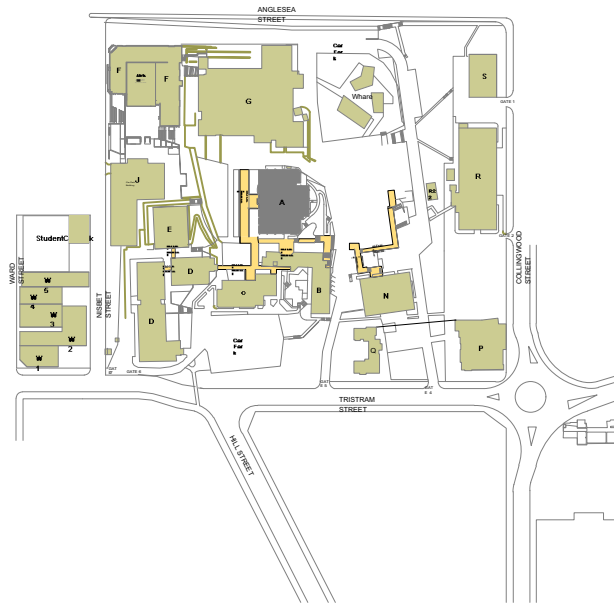
DATE:	May 2017	SHEET SIZE:	A3
-------	----------	-------------	----

CAD FILE:  
City Campus - A Block Updates

SHEETS:  
4 of 4

RELEASE NO:  
5.1.0

Location Plan



Level 3						
Building	Level	Room Name	Room Number	Category	Area	
Block A	3	Rooftop Plant Room 1	A3.01	I-Storage/Cleaning/Caretaking	78.85	
Block A	3	Small Office	A3.02	I-Storage/Cleaning/Caretaking	6.6	
Block A	3	Roof Space	A3.03	I-Storage/Cleaning/Caretaking	47.2	
Block A	3	Plant Room 2	A3.04	I-Storage/Cleaning/Caretaking	54.86	Total
Block A	3	Lift Shaft	A3.05	I-Storage/Cleaning/Caretaking	11.18	Net
Block A	3	Plant Room 3	A3.06	I-Storage/Cleaning/Caretaking	32.2	Gross
					230.9	1157

